



CREATIVITY
+ TECHNOLOGY



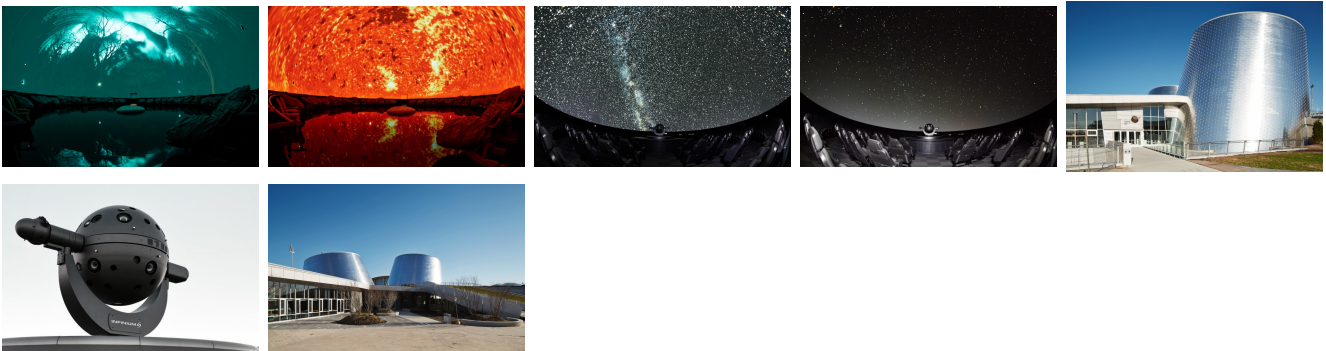
SPACE TRAVEL

HEMISPHERIC THEATRES

Rio Tinto Alcan Planetarium

Montreal, Quebec, Canada, 2013

The Rio Tinto Alcan Planetarium boasts state-of-the-art technology. The visit is made up of three complementary experiences: two hemispheric theatres offering immersive shows, as well as a museum exhibit. The theatres were created by XYZ, in collaboration with American planetarium show specialist Sky-Skan.



Description

Two domes, each 18 metres across and over 9 metres high, covered with 502 aluminium panels perforated and riveted in a spiral pattern, form a canopy over the theatres. One of the theatres includes a unique hybrid multimedia technology. This technology combines high-definition video and an optomechanical projector to create an extremely precise 360° immersive experience.

Mandate

Project management
Technical direction
Audiovisual design
Installation
Programming

Expertise

Audio
Video
Lighting
Control systems
Stage design

Production

City of Montreal / Rio Tinto
Alcan Planetarium